



# // JAPANDI

---

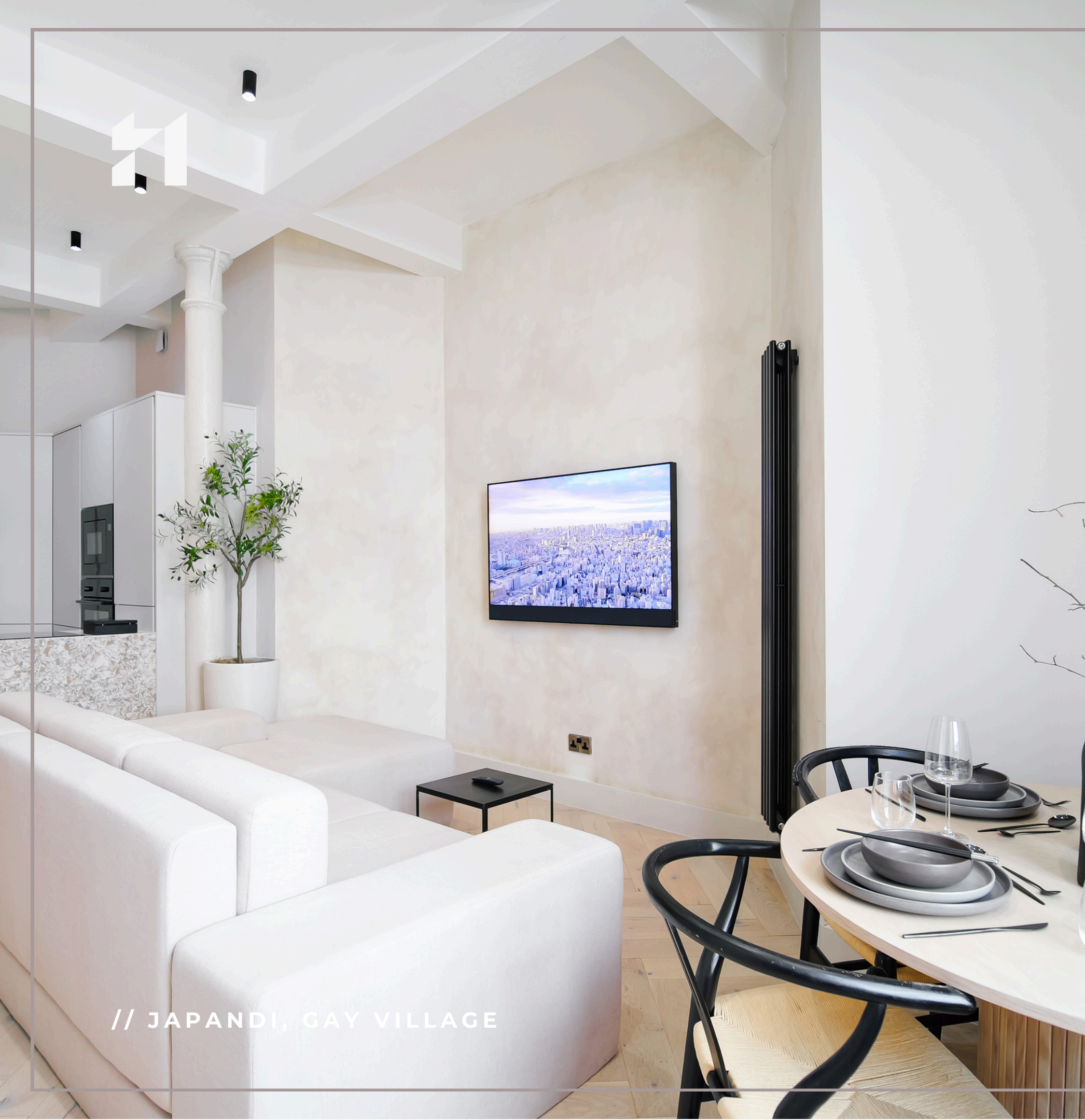
GAY VILLAGE

1-4 GUESTS | 1 BEDROOM | 1 BATH | 2 BEDS





WHERE LESS BECOMES MORE,  
AND SIMPLICITY BECOMES SOUL



// JAPANDI, GAY VILLAGE

THIS WELL APPOINTED ONE BEDROOM,  
ONE BATHROOM HOME OF  
APPROXIMATELY 680 SQUARE FEET SITS  
ON THE EDGE OF MANCHESTER'S GAY  
VILLAGE DISTRICT.

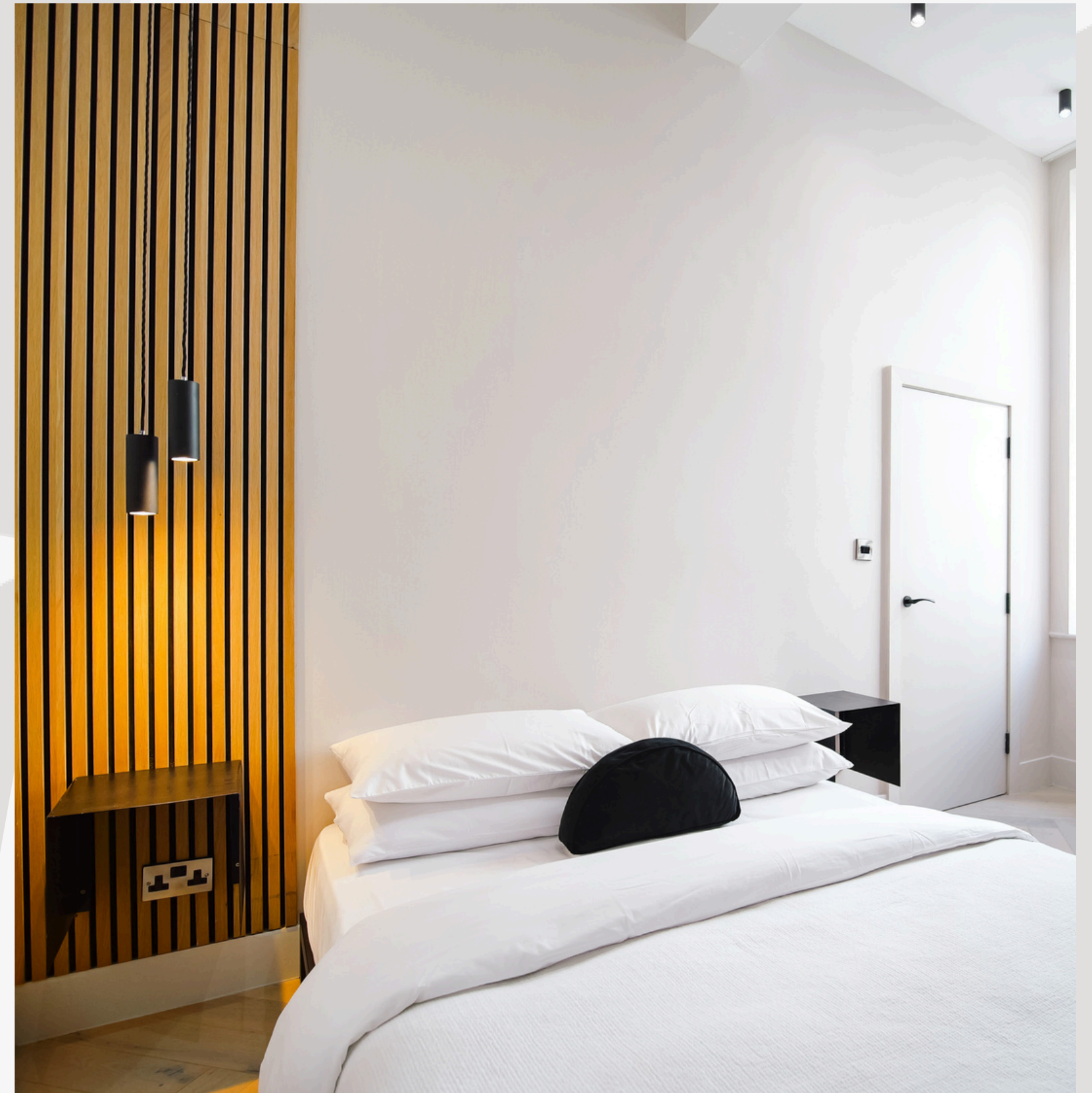
The design draws upon the harmony of two  
cultures, uniting the clean restraint of Japanese  
aesthetics with the gentle warmth of  
Scandinavian living. It is a home shaped by calm,  
balance and the beauty of imperfection, where  
less truly becomes more.

// BOOK HOME

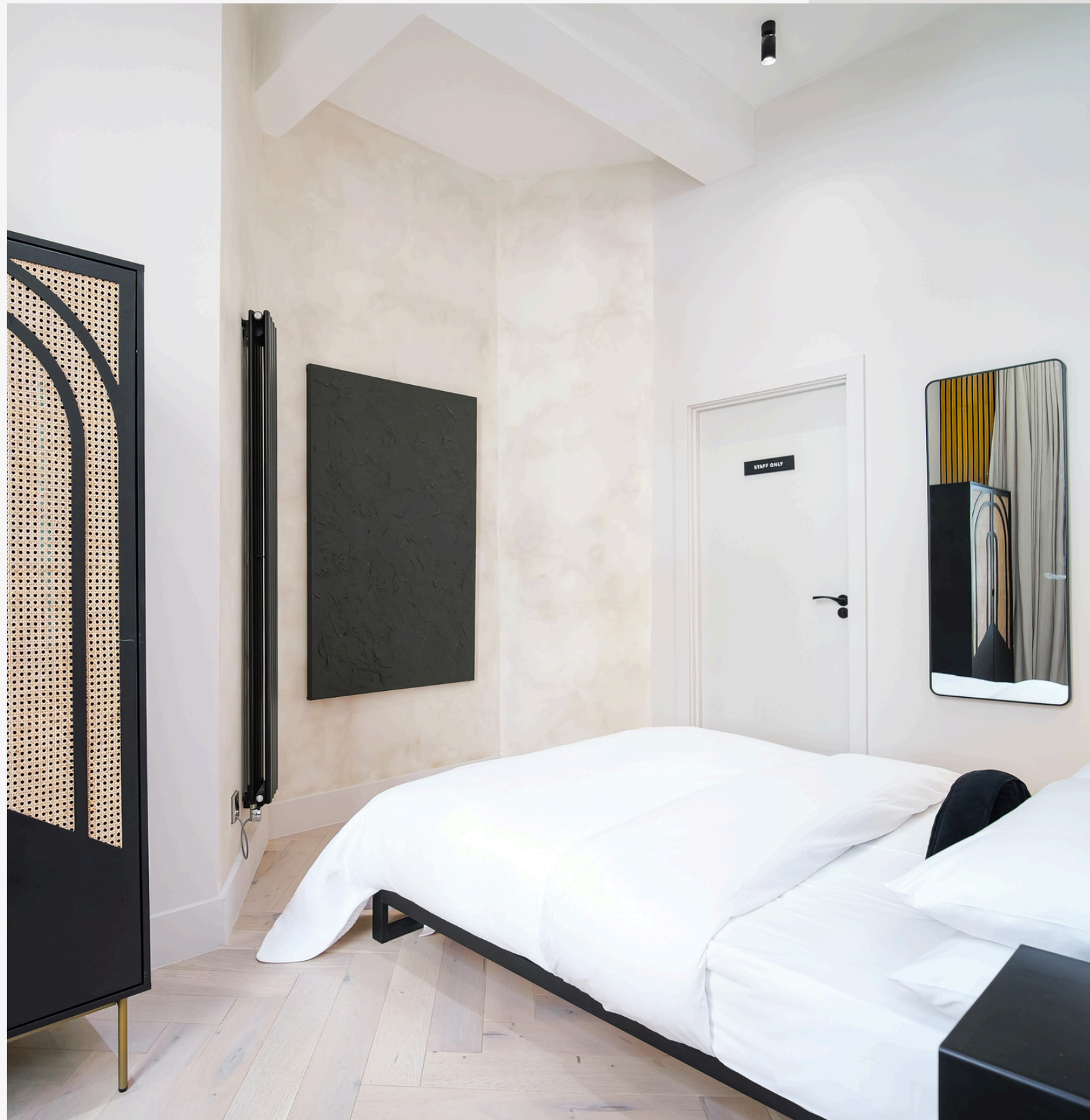
// PAGE 02



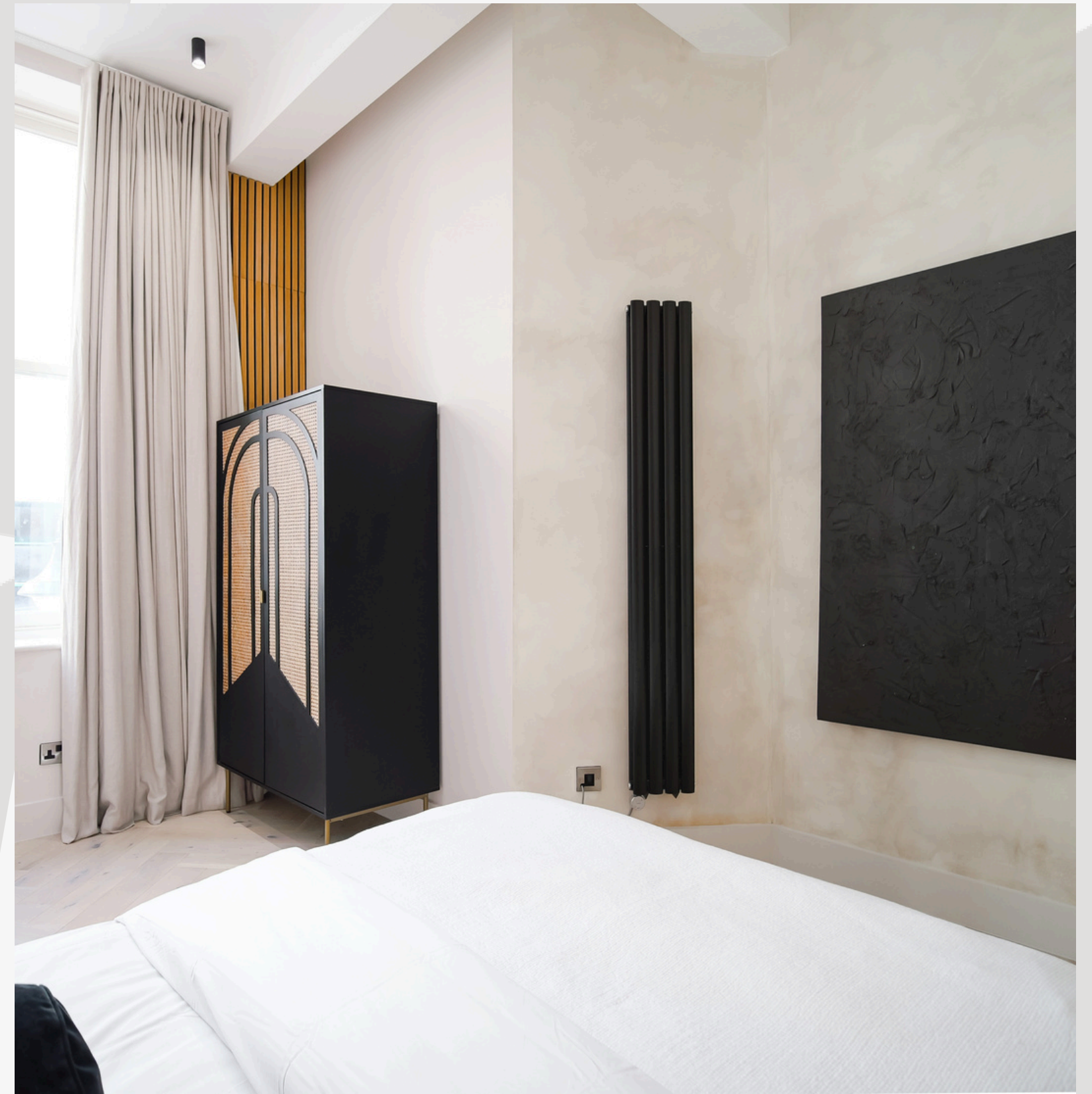
// JAPANDI, GAY VILLAGE



// PAGE 03



// JAPANDI, GAY VILLAGE



// PAGE 04



// JAPANDI, GAY VILLAGE

Japandi, as the name suggests, is a blend of Japanese and Scandinavian style. It is influenced by the ancient Japanese philosophy of wabi sabi, which values slow living, contentment and simplicity, and the Scandinavian practice of hygge, which embraces comfort, cosiness and wellbeing.

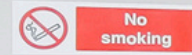
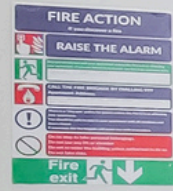
Limewashed walls create a soft, natural texture that moves with the light, while pale timber, linen and ceramic finishes bring quiet warmth to every room. This home feels deeply human, a sanctuary where design serves life, and simplicity finds its soul.

// BOOK HOME

// PAGE 05













INDIVIDUALLY VETTED AND AMENITY STANDARDISED

## TO MEET OUR HEIM STANDARD KITEMARK

### SLEEPING

High-Quality Mattresses, 12-Tog Duvets,  
High & Low-Pile Pillows, 300TC Bed  
Linen

### LAUNDRY & CLEANING

Set of 9 Housekeeping Essentials\*, Iron,  
Ironing Board

\*Includes; Washing-up Liquid, Dishwasher Tabley, Washing  
Machine Capsule, Sponge Dish Cloth, 2 Bin Liners

### BATHING & SANITARY

Dual-Control Hairdryer, Shampoo &  
Shower-Gel, Hand Soap, 700GSM  
Towelling, Who Gives A Crap ® Toilet  
Paper

### MISCELANEOUS

Fire Extinguisher, Fire Blanket, First  
Aid Kit, Smoke Detector, Heat Detector,  
Dustpan & Brush

### KITCHEN & DINING

Hob, Oven, Grill, Microwave,  
Refrigerator, Freezer, Kettle, Toaster,  
Nespresso Machine, Complimentary Hot  
Drink Refreshments, Variety of Pans,  
Variety of Oven Trays, Variety of  
Utensils & Knives, Other Miscellaneous  
Cooking Apparatus, Crockery, Cutlery,  
Variety of Glasswares, Salt & Pepper  
Sachets, Cooking Oil Sachet's, Oven  
Gloves, Tea-Towel



GET TO KNOW

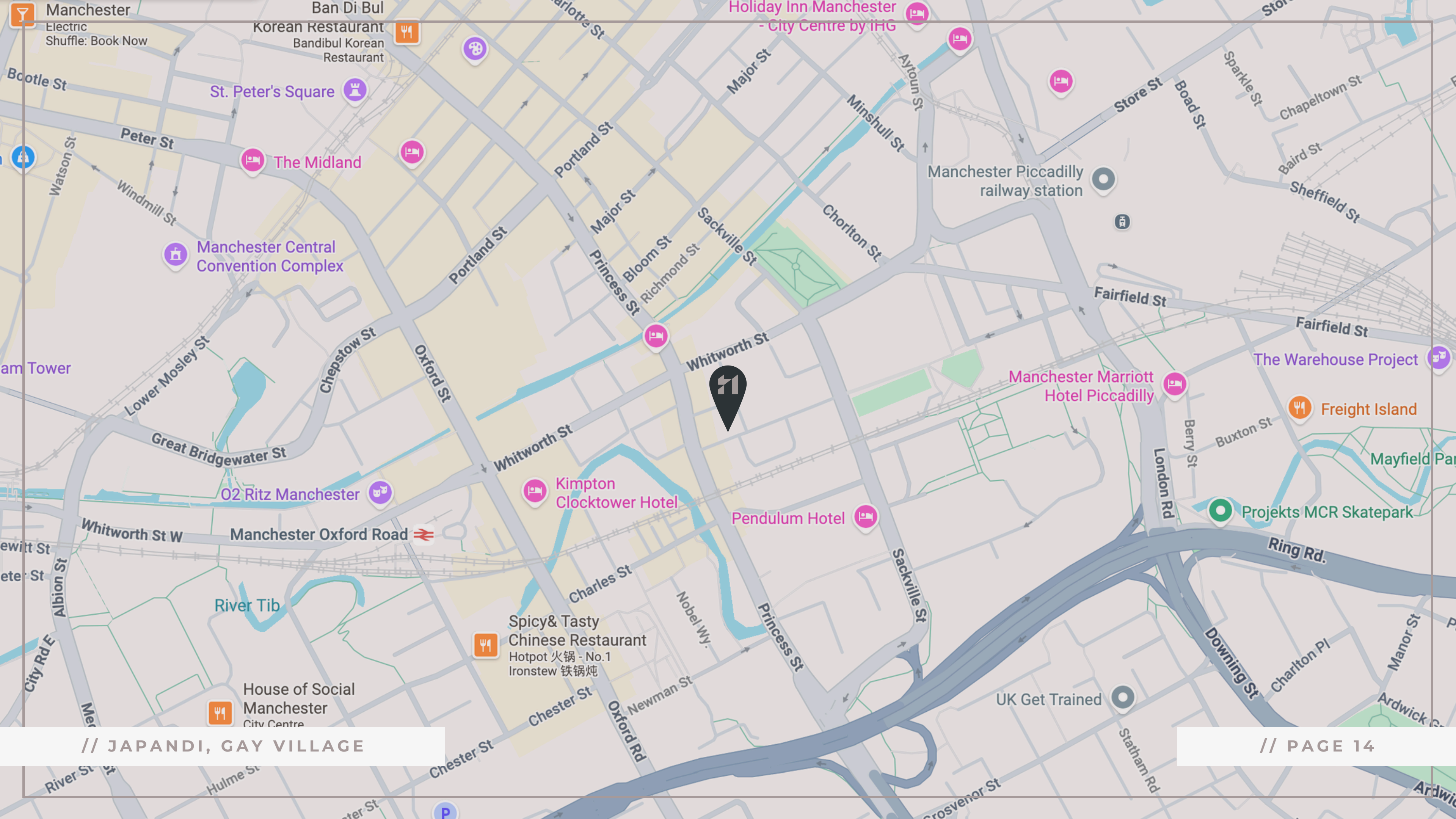
## THE NEIGHBOURHOOD: GAY VILLAGE

Canal Street is Manchester's famous Gay Village, a lively and welcoming district known for its vibrant nightlife and inclusive atmosphere. Situated alongside the Rochdale Canal, it's a hotspot for bars, clubs, and restaurants, attracting a diverse crowd. Canal Street is famous for its colourful events, strong community spirit, and as a beacon of LGBT culture in Manchester.

// EXPLORE NEIGHBOURHOOD

// JAPANDI, GAY VILLAGE

// PAGE 13





EVERYTHING YOU NEED

## JUST A TAP AWAY

Enhance your stay. From early check's to private chefs, our **Guest Pass** puts you in control. Your stay, your way.



Check-in  
Online



Access your  
mobile key



Property  
Guidebooks



Book upgrades  
and more!

// JAPANDI, GAY VILLAGE



**THE HEIM**

---

CHECK-IN  
Tommorow @ 15:00

---

WIFI: \*\*\*\*\*

---

Currently 21.0°C and sunny skies

---

VIEW OUR SOCIALS

---

CUSTOMIZE YOUR STAY

Early Check-In

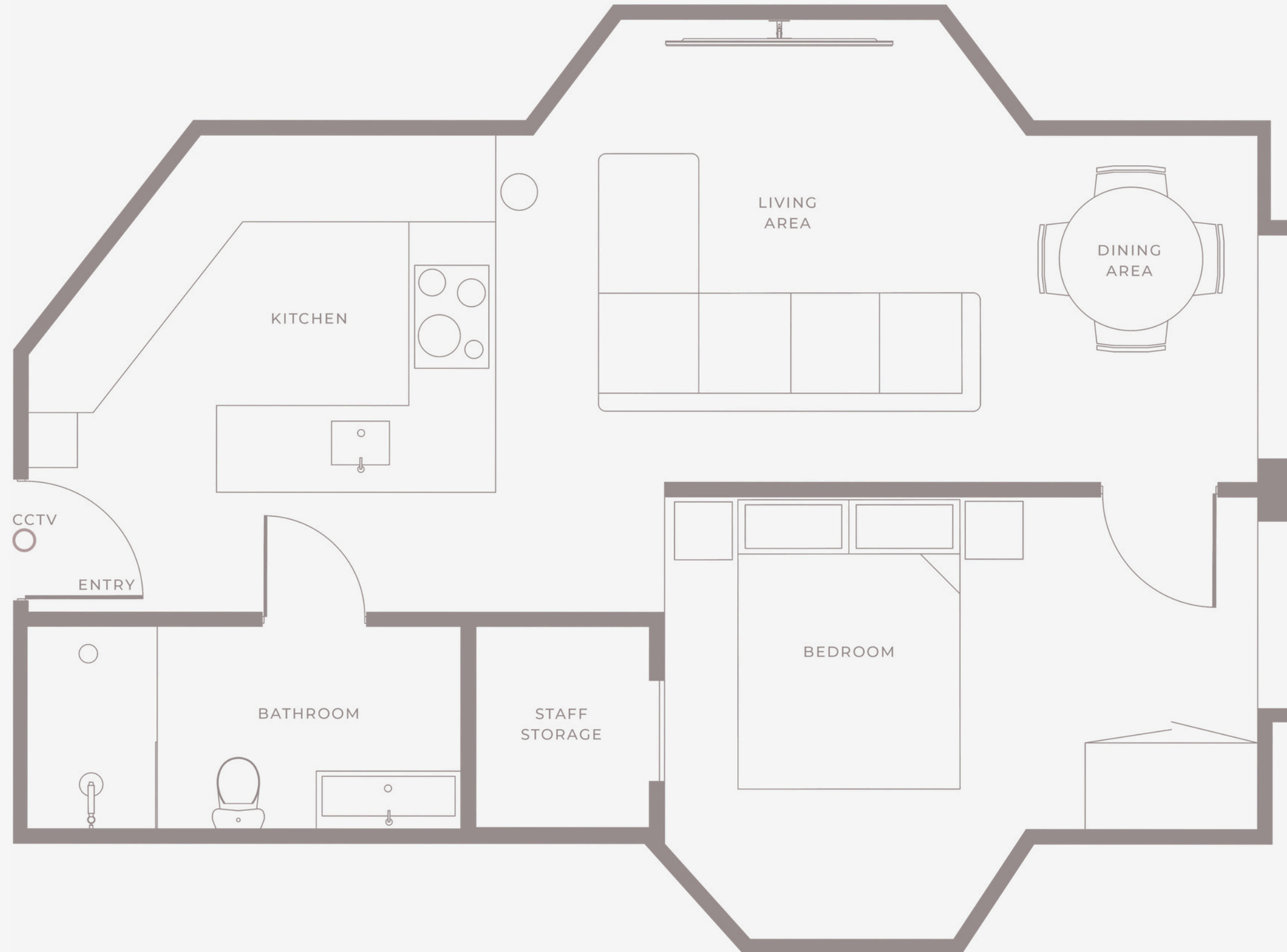
Late Check-Out

Bring a Furry Friend

// PAGE 15



680 SQFT | 63 SQM





GUEST SERVICES

## ARCHITECTS OF A GOOD TIME

Think of us as your virtual assistant. Your saver of the day. The fixer-upper. Whether it be 24 hour laundry and dry cleaning services, a drinks reception, a fridge stocked with your favourite food, or better yet, your very own private chef dining experience. You can have it all.

At The Heim you can experience a world where modern luxury unfolds beyond the expected and into anything that celebrates eccentricity and a lust for living your best life. We are the perfect combination of property, place and personal service.

[// VIEW OUR SERVICES](#)



# THE HEIM

The property particulars are a guide not statements. Descriptions, photographs, and plans are for guidance only. The Property is offered "subject to contract and references". No warranties, representations, License or Tenancy is given by The Heim. Our full disclaimer together with trading names and our Privacy Policy is shown on our website.

© The Heim 2025. All rights reserved.