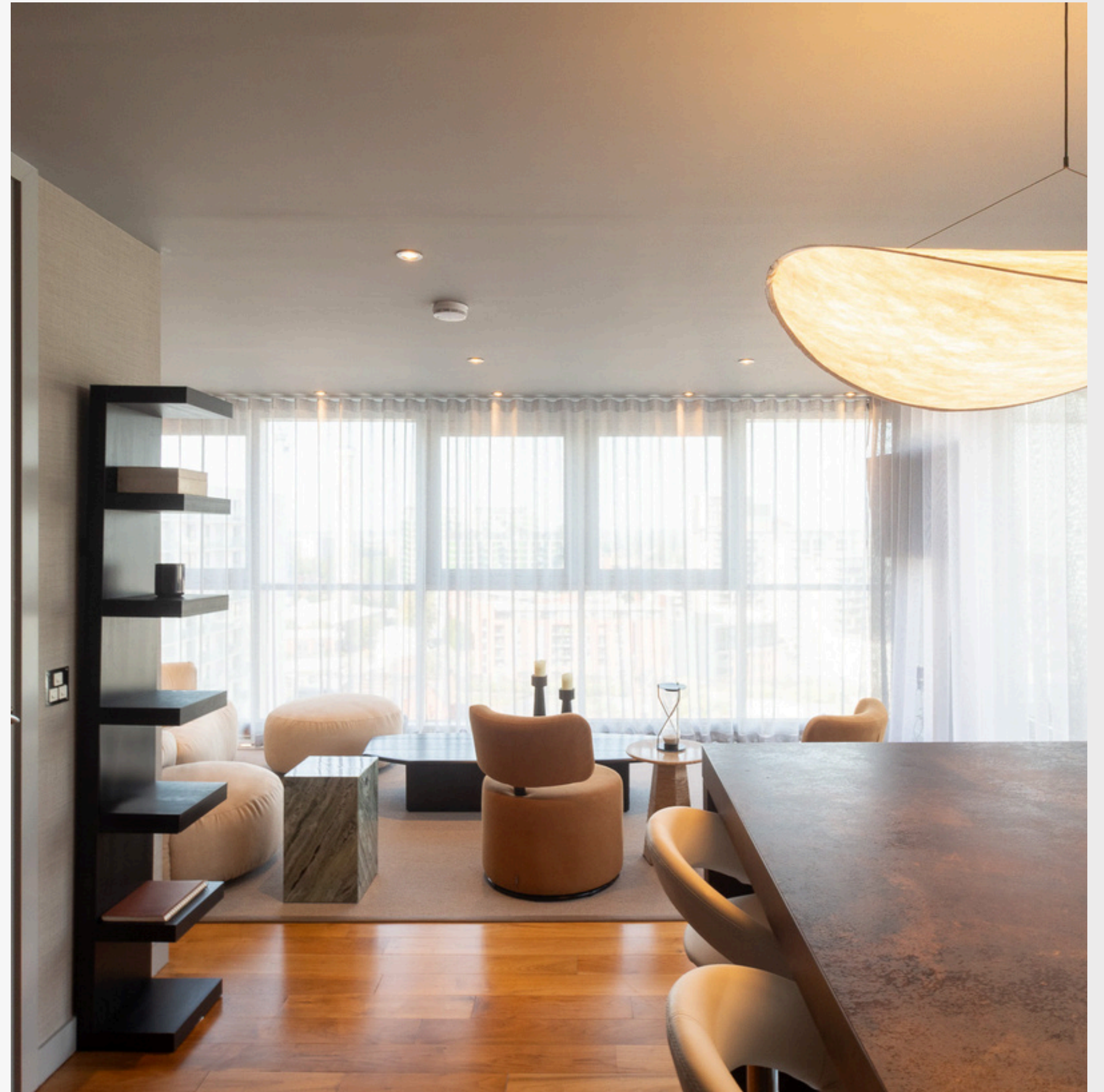




// GALLERY

CASTLEFIELD

1-4 GUESTS | 2 BEDROOMS | 2 BATHS | 2 BEDS





LIVING AS AN ART FORM,
SPACE AS EXPRESSION



// GALLERY, CASTLEFIELD

THIS LARGE DUPLEX PENTHOUSE HOME OF APPROXIMATELY 1,700 SQUARE FEET IS SET ATOP THE EDGE DEVELOPMENT IN THE HEART OF MANCHESTER CITY CENTRE. DESIGNED AS A CELEBRATION OF LIGHT AND PROPORTION.

It offers a contemporary retreat above the city streets below. The apartment features two king size bedrooms and two and a half bathrooms, comfortably sleeping up to four guests. Two expansive terrace-style balconies overlook the River Irwell and Manchester's skyline, capturing the city in shifting light throughout the day.

// BOOK HOME

// PAGE 02



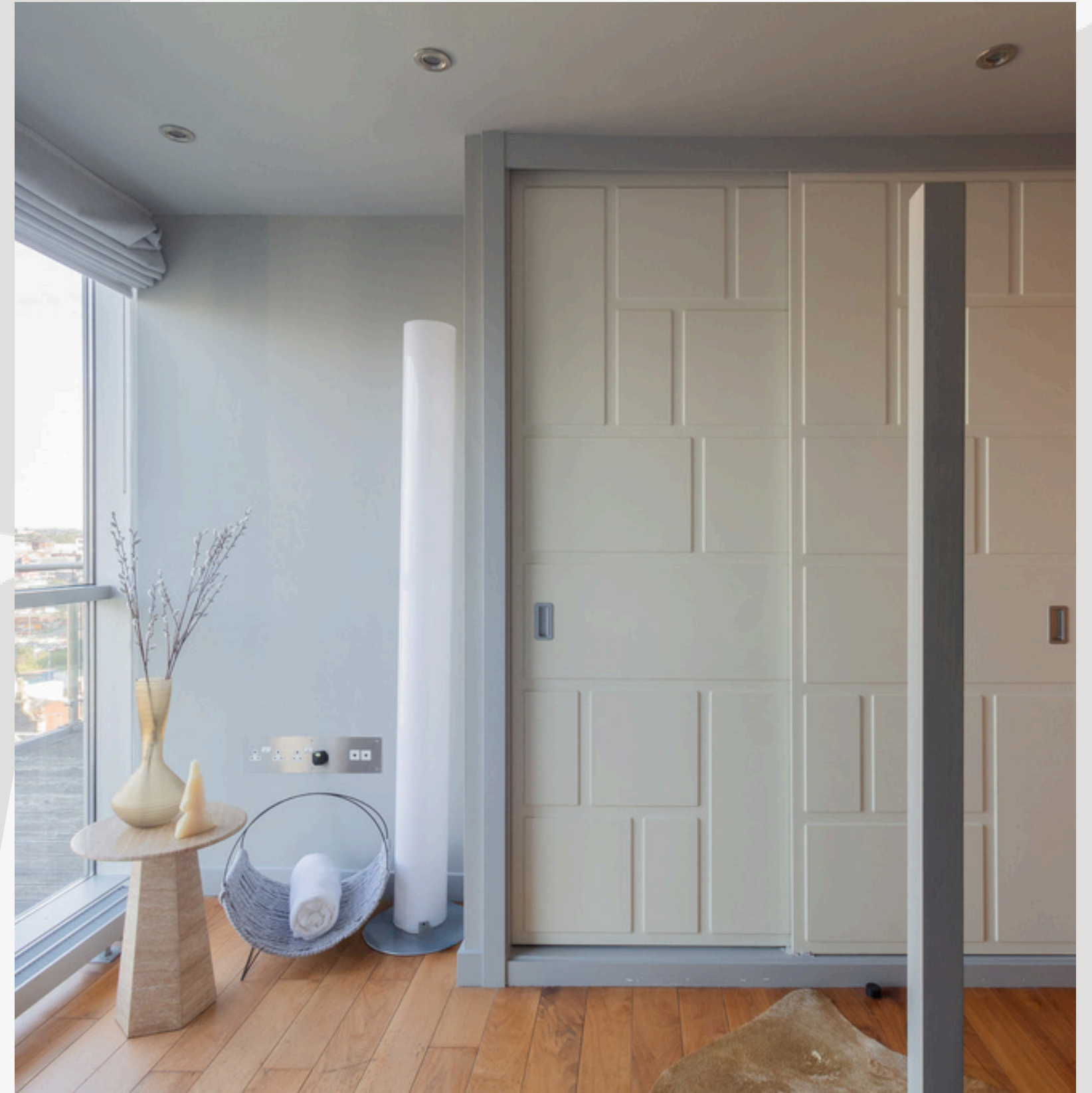
// GALLERY, CASTLEFIELD



// PAGE 03



// GALLERY, CASTLEFIELD



// PAGE 04



// GALLERY, CASTLEFIELD

The interior is defined by its openness and poise. An open plan living space and fully equipped kitchen create an atmosphere of effortless sophistication, while natural tones, sculptural furnishings and bold artwork bring warmth and identity.

Every detail feels considered yet uncontrived, forming a space that feels both curated and lived in. Located just moments from Deansgate, the Arndale and Exchange Square, it is a home that embodies the art of modern Manchester living.

// BOOK HOME

// PAGE 05



// GALLERY, CASTLEFIELD

// PAGE 07





// GALLERY, CASTLEFIELD

// PAGE 09





// GALLERY, CASTLEFIELD



// PAGE 11

INDIVIDUALLY VETTED AND AMENITY STANDARDISED

TO MEET OUR HEIM STANDARD KITEMARK

SLEEPING

High-Quality Mattresses, 12-Tog Duvets,
High & Low-Pile Pillows, 300TC Bed
Linen

LAUNDRY & CLEANING

Set of 9 Housekeeping Essentials*, Iron,
Ironing Board

*Includes; Washing-up Liquid, Dishwasher Tabley, Washing
Machine Capsule, Sponge Dish Cloth, 2 Bin Liners

BATHING & SANITARY

Dual-Control Hairdryer, Shampoo &
Shower-Gel, Hand Soap, 700GSM
Towelling, Who Gives A Crap ® Toilet
Paper

MISCELANEOUS

Fire Extinguisher, Fire Blanket, First
Aid Kit, Smoke Detector, Heat Detector,
Dustpan & Brush

KITCHEN & DINING

Hob, Oven, Grill, Microwave,
Refrigerator, Freezer, Kettle, Toaster,
Nespresso Machine, Complimentary Hot
Drink Refreshments, Variety of Pans,
Variety of Oven Trays, Variety of
Utensils & Knives, Other Miscellaneous
Cooking Apparatus, Crockery, Cutlery,
Variety of Glasswares, Salt & Pepper
Sachets, Cooking Oil Sachet's, Oven
Gloves, Tea-Towel



GET TO KNOW

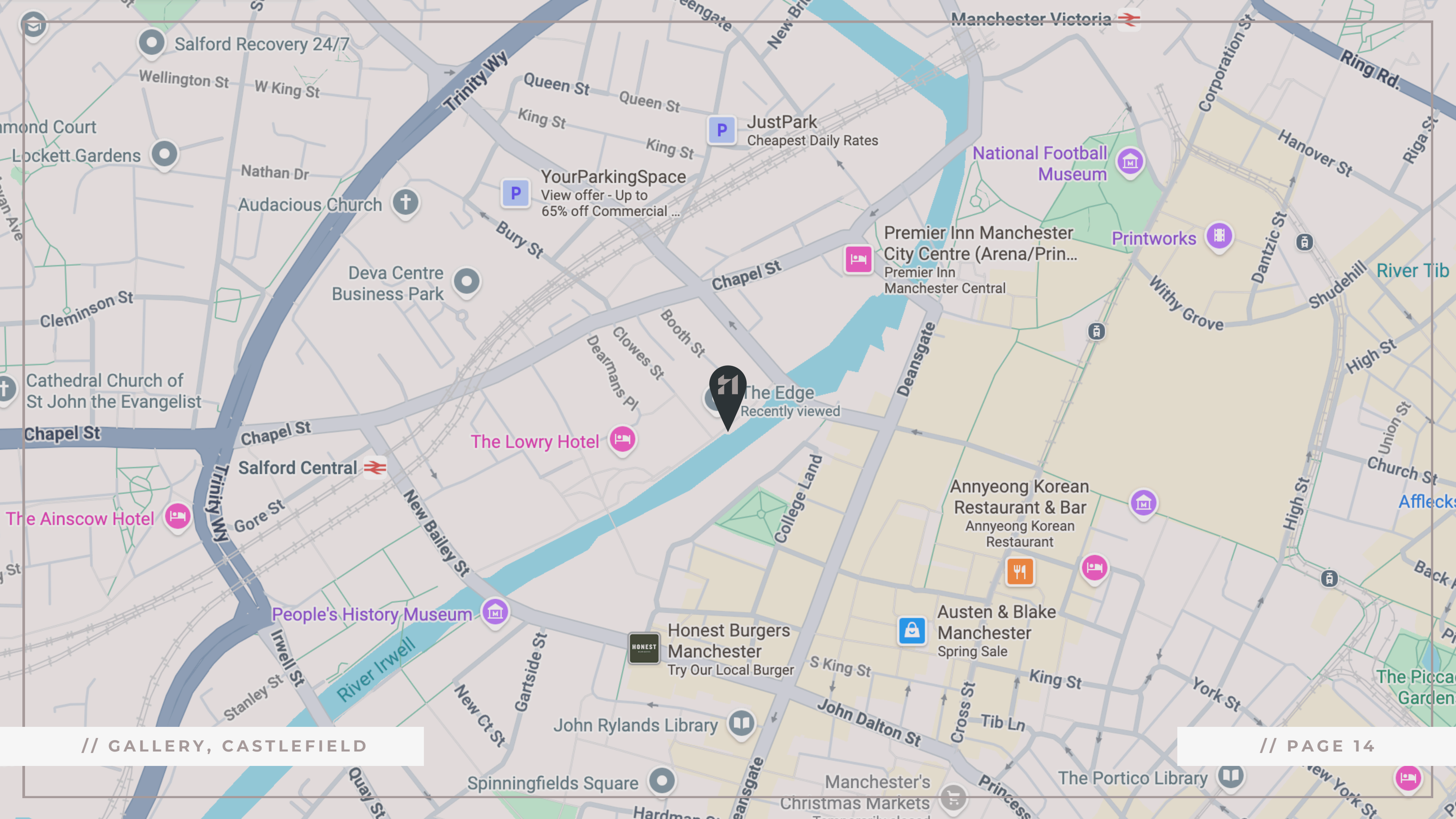
THE NEIGHBOURHOOD: CASTLEFIELD

Castlefield is Manchester's hidden gem. A lively neighbourhood where ancient history and modern cool collide. Quirky cafés nestled beside old redbrick warehouses, or catching live music at the buzzing Castlefield Bowl. With its Roman fort ruins, leafy parks, and waterfront bars, Castlefield offers a laid-back, friendly vibe that's perfect for lazy afternoons or exciting nights out.

// EXPLORE NEIGHBOURHOOD

// GALLERY, CASTLEFIELD

// PAGE 13





EVERYTHING YOU NEED

JUST A TAP AWAY

Enhance your stay. From early check-ins to private chefs, our **Guest Pass** puts you in control. Your stay, your way.



Check-in
Online



Access your
mobile key



Property
Guidebooks



Book upgrades
and more!

// GALLERY, CASTLEFIELD



THE HEIM

CHECK-IN
Tomorrow @ 15:00




WIFI: *****

 Currently 21.0°C and sunny skies

VIEW OUR SOCIALS



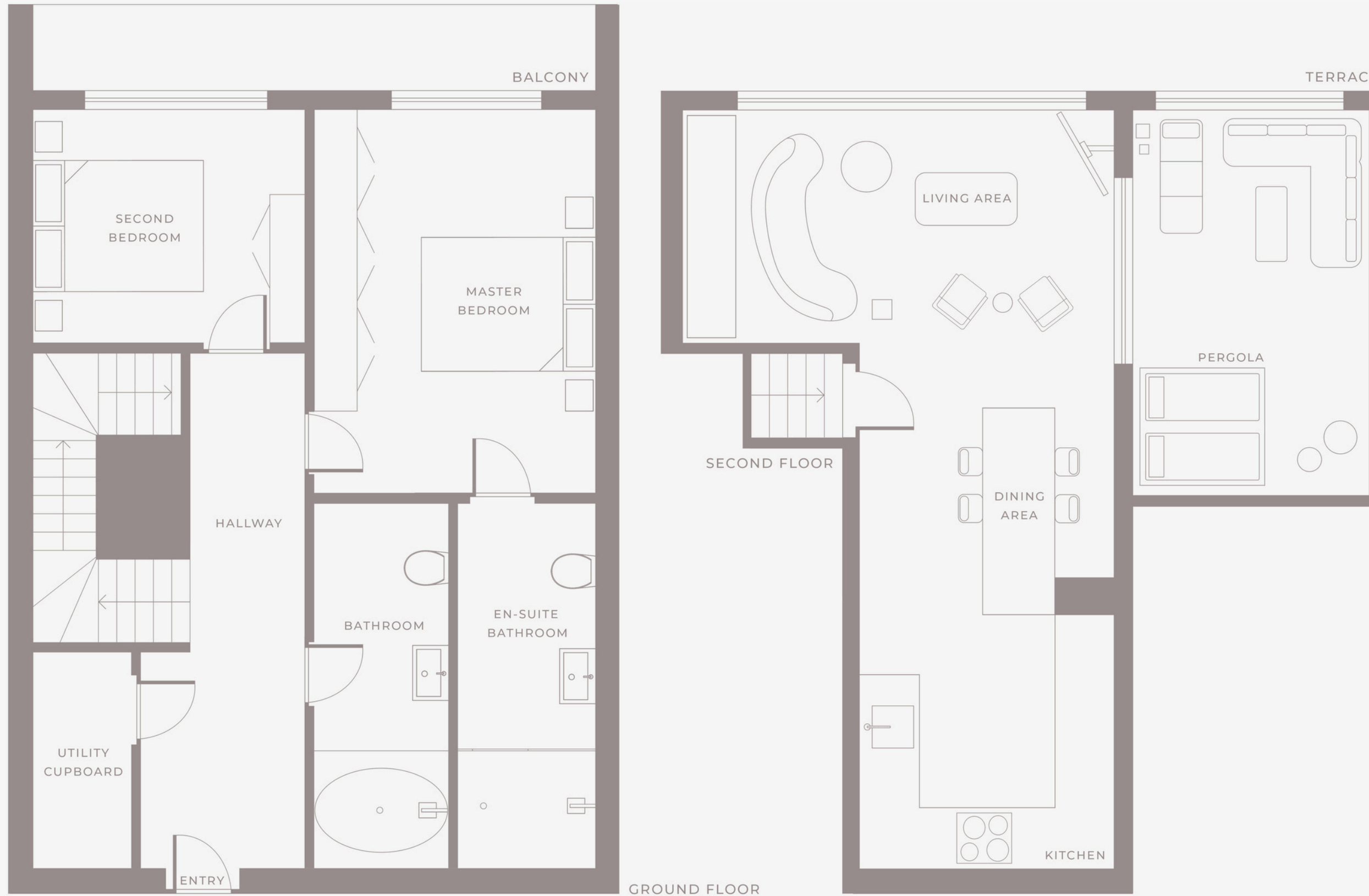
CUSTOMIZE YOUR STAY

| | | |
|--|--|--|
| Early Check-In  | Late Check-Out  | Bring a Furry Friend  |
|--|--|--|

// PAGE 15



1700 SQFT | 157 SQM





GUEST SERVICES

ARCHITECTS OF A GOOD TIME

Think of us as your virtual assistant. Your saver of the day. The fixer-upper. Whether it be 24 hour laundry and dry cleaning services, a drinks reception, a fridge stocked with your favourite food, or better yet, your very own private chef dining experience. You can have it all.

At The Heim you can experience a world where modern luxury unfolds beyond the expected and into anything that celebrates eccentricity and a lust for living your best life. We are the perfect combination of property, place and personal service.

[// VIEW OUR SERVICES](#)



THE HEIM

The property particulars are a guide not statements. Descriptions, photographs, and plans are for guidance only. The Property is offered "subject to contract and references". No warranties, representations, License or Tenancy is given by The Heim. Our full disclaimer together with trading names and our Privacy Policy is shown on our website.

© The Heim 2025. All rights reserved.